

Application: Mainly used in building decoration materials, stamping products, exchanger, transformer strip, capacitor strip, bottle cap material, all aluminum pop-top cans body, lid, pull ring, all sorts of lamps and lanterns parts, nameplate, PS printed materials, aluminum plastic composite tube, building mirror materials, automobile chassis, insulation materials, medical bottle cap material, pp caps material, car insulation board, health equipment parts and pipe, Marine equipment and materials, ship accessories, heat exchanger, the room partition, baffle, shifting board, washing machine cylinder body, tanks, the production of conductive body, food, chemical and brewing industry with extrusion coil, all kinds of hose, metal parts, chemical equipment, railway tank truck, conductive body materials, instruments and meters materials, welding rod, wire, conductive stranded wire, bus, etc.

Mechanical property: could meet standard GB/T-3880-2006, ASTM, JIS, and ENAW.

Certification: ISO9001:2000, Mill test report, Certificate of origin, ROHS, SGS report.

Surface quality: Smooth, clean, be free of oil, stain, scratch, wave and corrosion, ready for paint, Oxidation and lamination.

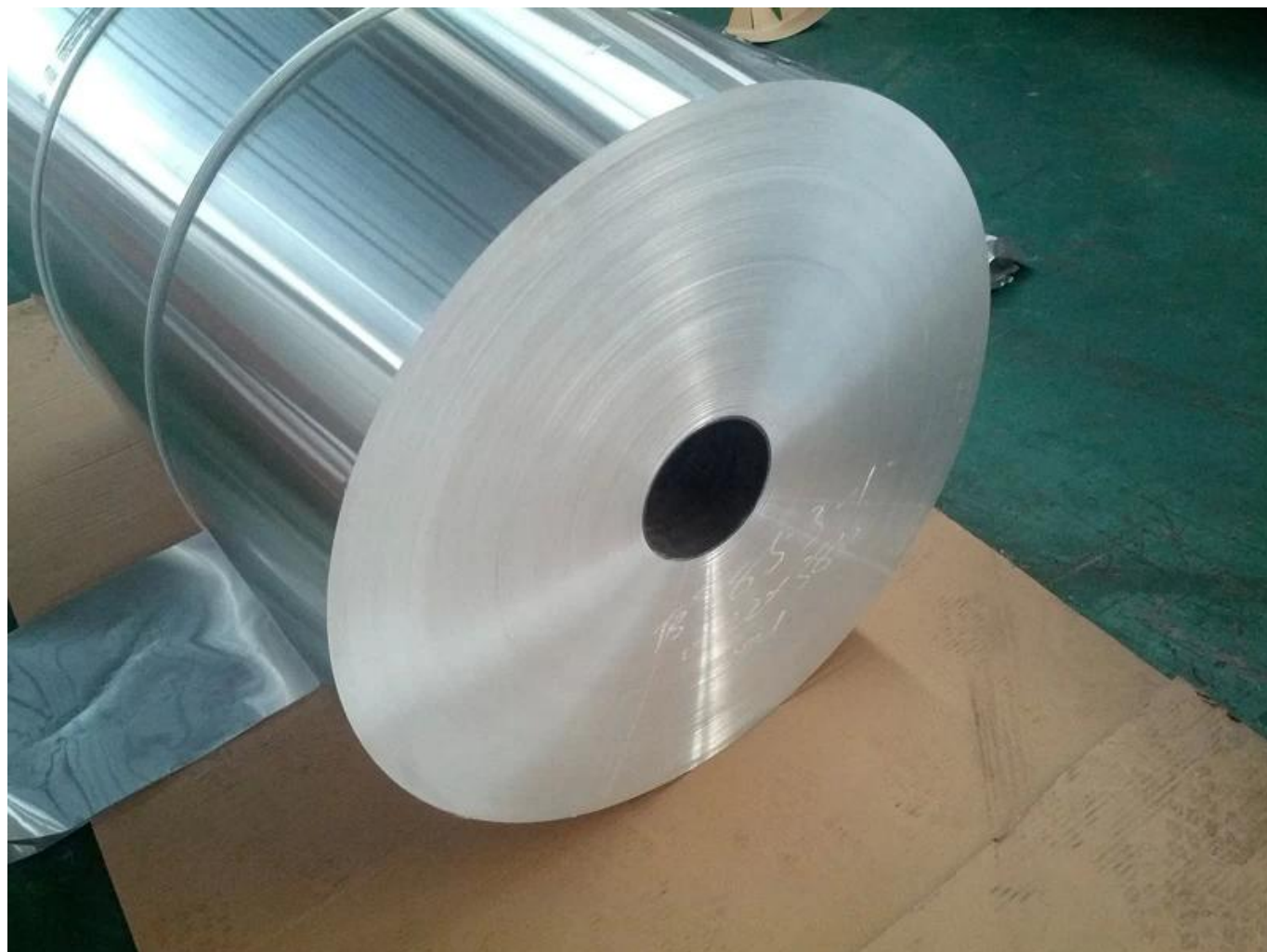
Packing: standard export package suitable for seafreight.

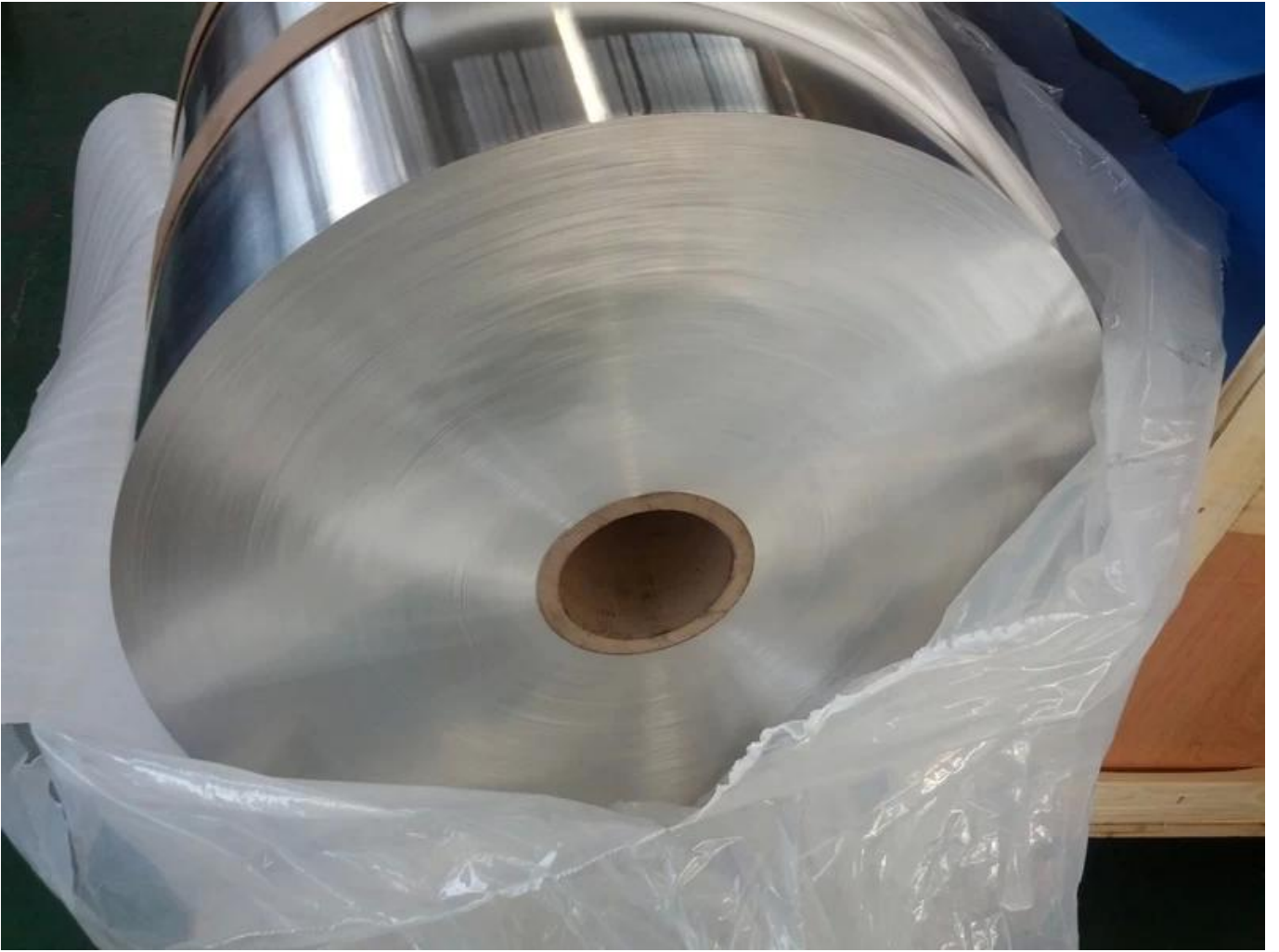
Time of delivery: within 30days

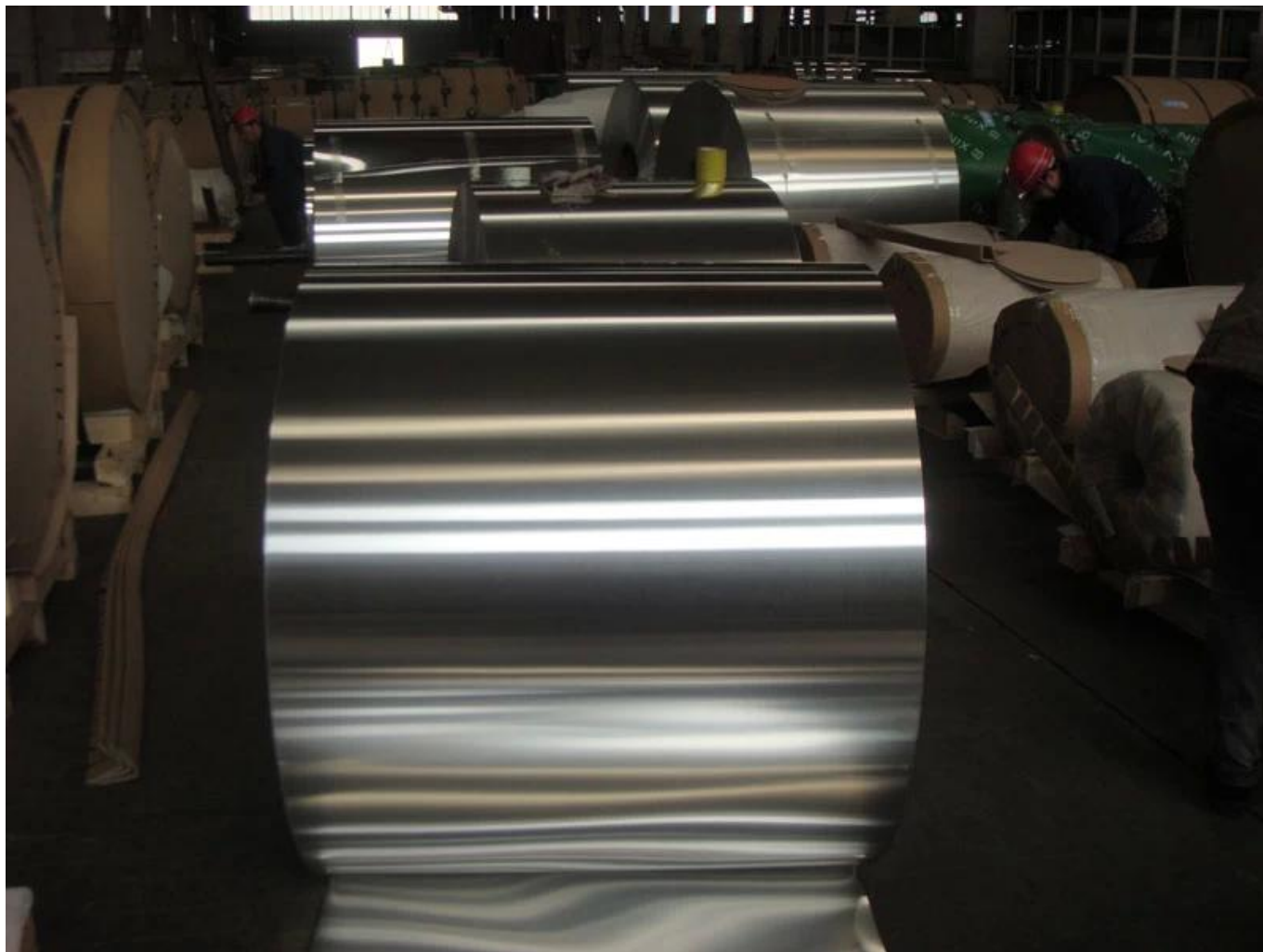
Month capacity: 2000tons/month

Exporting port: DALIAN, SHANGHAI, TIANJIN, QINGDAO

Payment term: T/T or Irrevocable LC at sight.







ALLOY NO.	TEMPER	THICKNESS(MM)	WIDTH(MM)	USAGE
1050 □ 1060	H18	0.14-0.30	200-1600	PS printed materials substrate etc
1050 □ 1060 □ 1100	O H22	0.15-1.50	20-1600	aluminum plastic composite tube etc
1060	O	0.20-3.0	100-1600	transformer strip etc
1100 □ 1060	O H22	0.20-0.50	100-1600	capacitor strip etc
1050 □ 1060 □ 1070 □ 1100 □ 1200	O H12/2 H14/24 H16/26 H18 H19	0.20-3.0	15-1600	building decoration materials, stamping products, building mirror materials, nameplate, insulation materials ,etc
3003 □ 3105	O H12/H22 H14/24 H16/26 H18 H19	0.20-3.0	15-1600	Washing machine cylinder body, heat exchanger, Room partiti on, baffle, hall board, automotive insulation board, deep drawing products, sanitary equipment parts and pipes, roof building materials, automobile license plate, etc

3004 □ 3104 □	O H12/H22 H14/24 H16/26 H18/28 H32 H36 H38	0.20-3.0	15-1600	all aluminum pop-top cans body ,a ll sorts of lamps and lanterns parts , automobile chassis, the television lagging, etc
3005 □ 3003	H14 H16	0.20-3.0	15-1600	Cell lith ium battery shell, etc
4343/4004/4343	O H14 H24 H18	0.20-3.0	20-1600	Brazing comp osite materials etc
5005 □ 5052 □ 5082 □ 5083 □ 5182 □ 6082	O H111 H12 H14 H16 H18 H22 H32 H24 H34 H26 H36 H38 H112	0.20-30	20-1600	Washing machine cylinder body, tanks, all aluminum POP cans, lid, pull ring, Marine equipment and materials, railway tank truck, Marine equipment and materials ship accessories, instruments materials brazing composite materials etc
8011	H14 H24 H16 H26	0.14-0.30	200-1600	Medical cap material, PP caps material, etc

Package photo



Factory photo



Certification



FAQ:

Q: How long is your delivery time?

A: Generally it is 5-10 days if the goods are in stock. or it is 45-60 days if the goods are not in stock.

it is according to quantity.

Q: Do you provide samples ? is it free or extra ?

A: Yes, we could offer the sample for free charge but do not pay the cost of freight.

Q: What is your terms of payment ?

A: 30% T/T in advance ,balance before shipment. L/C

Contact us

We are looking forward to having chance to start our long-term

cooperation with friends all over the world ! Your 100% satisfaction will always be our target !

Should you have any requirements or doubts, please feel free to contact us!

Cindy Xie

Harbin Dong Xing Aluminum Co.,Ltd

Tel:86-0451-86527920 QQ:2851851709 Skype:cindy_xie1979